

# MONTHLY MEMBERSHIP PROGRESS REPORT

LOCATION ILLINOIS

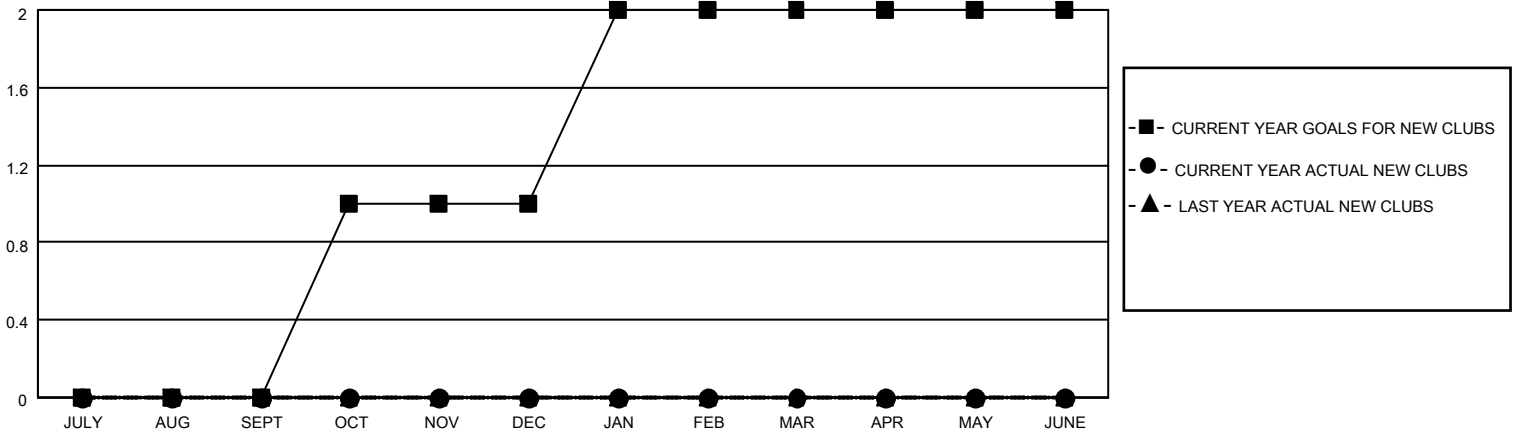
District 1 F

Results as of: 1/31/2023

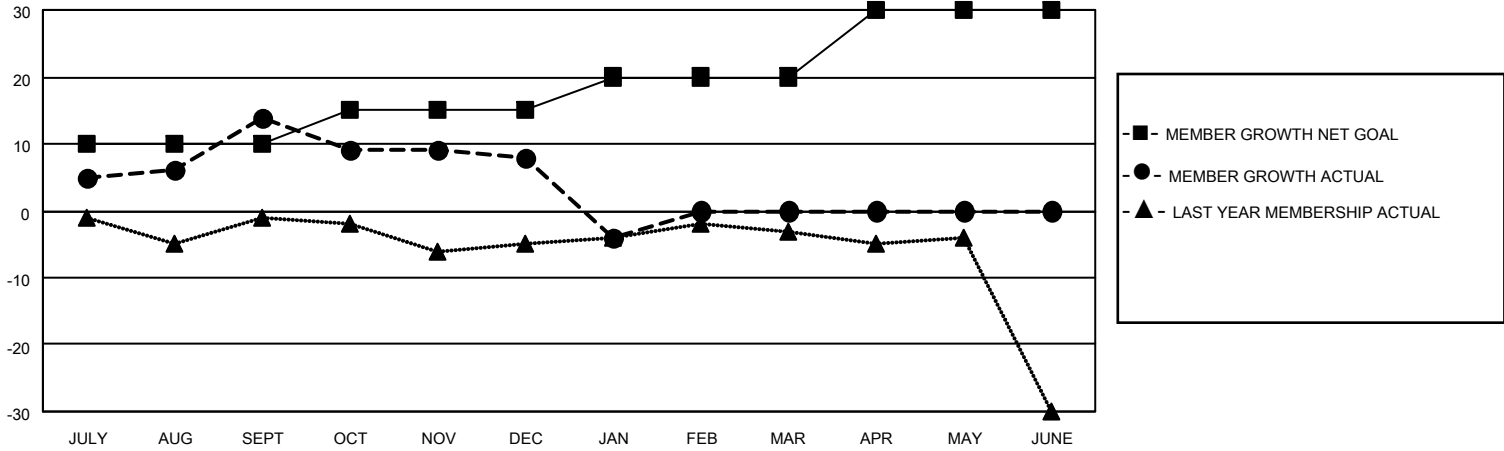
Clubs			
RESULTS FOR 2022-2023			
QUARTER	NEW CLUB GOAL	NEW CLUBS	DROPPED CLUBS
JULY/AUG/SEPT	0	0	0
OCT/NOV/DEC	1	0	1
JAN/FEB/MAR	1	0	0
APR/MAY/JUNE	0	0	0

Members			
RESULTS FOR 2022-2023			
QUARTER	MEMBER GROWTH NET GOAL	MEMBER GROWTH ACTUAL	DROPPED MEMBERS ACTUAL (including transfers)
JULY/AUG/SEPT	10	25	8
OCT/NOV/DEC	5	26	29
JAN/FEB/MAR	5	11	20
APR/MAY/JUNE	10	0	0

**GOALS AND ACTUAL NEW CLUBS CUMULATIVE**



**GOALS AND ACTUAL MEMBERS CUMULATIVE**



DROPPED CLUBS: 1	
<b>DROPPED MEMBERS</b>	
DECEASED	8
CLUB CANCELLED	7
OTHER	42
<b>TOTAL</b>	<b>57</b>

18 CLUBS OF 31 ADDED 1 OR MORE NEW MEMBERS

[CLICK HERE FOR CUMULATIVE MEMBERSHIP DATA](#)

<u>GENDER DISTRIBUTION</u>	
MALE	583 (70.16%)
FEMALE	247 (29.72%)
NON BINARY	0 (0.00%)
PREFER NOT TO ANSWER	1 (0.12%)
<b>TOTAL FAMILY UNIT MEMBERS</b>	<b>144</b>
<b>FAMILY MEMBERS PAYING HALF DUES</b>	<b>74</b>